

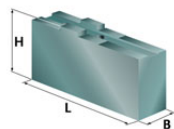
# Futtertype: Röhm Duro 400



**HWR** Spanntechnik GmbH  
 Lübemannstraße 13  
 28876 Oyten  
 Telefon (04207) 6887-0  
 Fax (04207) 6887-15  
 email: info@spannbacken.de

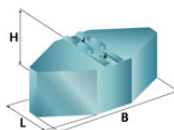


### Weiche Aufsatzbacke mit Kreuzversatz



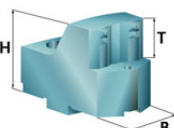
B	H	L	kg/Satz	Typ	Ident-Nr.	Werkstoff
50	80	180	13,7	<b>CU40</b>	236012	C15
64	76	130	11,8	<b>CU401</b>	237401	C15
64	76	180	16,5	<b>CU402</b>	237402	C15
64	102	155	15,3	<b>CU403</b>	237403	C15
64	127	155	18,7	<b>CU404</b>	237404	C15
80	80	130	16,2	<b>DP40</b>	237405	C15
50	160	155	25,2	<b>CU406</b>	237406	C15
50	80	180	5,1	<b>CW40</b>	238005	Aluminium

### Weiche Segment-Aufsatzbacke mit Kreuzversatz



330	85	160	40,2	<b>CQ40</b>	239005	C15
330	90	160	12,0	<b>HT40</b>	240005	Aluminium

### Gehärtete Greiferspannbacken, Außenspannung



B	H	T	kg/Satz	Typ	Ident-Nr.	Werkstoff
50	71	33				

#### Spannbereich

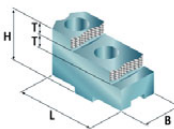
87-98/ 103-114/ 119-131/ 136-148/ 153-164  
 169-181/ 186-198/ 203-215/ 220-232  
 237-249/ 254-266/ 271-283/ 288-300

93-104/ 109-120/ 125-137/ 142-153/ 158-170  
 175-187/ 192-204/ 209-221/ 226-238  
 243-255/ 260-272/ 277-289/ 294-306

115-126/ 131-143/ 148-160/ 165-176/ 181-193  
 198-210/ 215-227/ 232-244/ 249-261/ 266-278  
 283-295/ 300-312/ 317-329/ 334-346/ 351-363

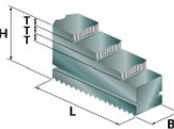
122-133/ 138-150/ 155-167/ 171-183/ 188-200  
 205-217/ 222-234/ 239-251/ 256-268/ 273-285  
 290-302/ 307-319/ 324-336/ 341-353/ 358-370

### Gehärtete umkehrbare Aufsatzbacken



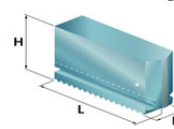
B	H	L	T	Typ	Ident-Nr.	Werkstoff
45	75	130	20	<b>GX40</b>	249005	16MnCr5

### Gehärtete einteilige Stufenblockbacken



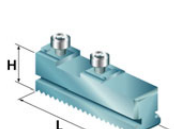
B	H	L	T	Typ	Ident-Nr.	Werkstoff
45	93	167	20	<b>FST40</b>	260040	16MnCr5

### Monoblockbacken mit Modulschrägverzahnung



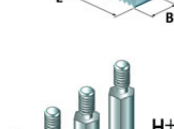
B	H	L	Typ	Ident-Nr.	Werkstoff
45	93	176	<b>BL40</b>	257040	16MnCr5

### Grundbacken mit Modulschrägverzahnung

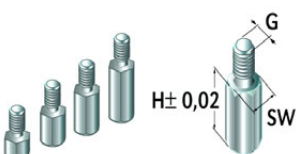


B	H	L	Gewinde	Typ	Ident-Nr.	Werkstoff
45	55	160	M16*1,5*40	<b>MFG400</b>	265005	16MnCr5

### Auflagebolzen



G	H	SW	Typ	Ident-Nr.	Werkstoff
M8	5	13	<b>IU05</b>	229008	C15
M8	10	13	<b>IU10</b>	229009	C15
M8	15	13	<b>IU15</b>	229010	C15
M8	20	13	<b>IU20</b>	229011	C15
M8	25	13	<b>IU25</b>	229012	C15



**Gripper Hartmetall**



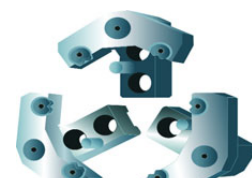
**Ausdrehvorrichtung**



**Stangengreifer**



**Reinigungsplatte**



**Pendelbacken**