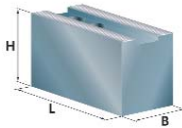
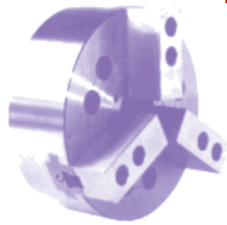


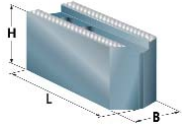
# Futtertype: Howa HO27M6



### Weiche Aufsatzbacke mit Spitzverzahnung 1,5\*60°, Nut=12mm

**Nutenstein: GP06**

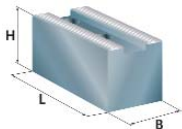
B	H	L	kg/Satz	Typ	Ident-Nr.	Werkstoff
30	30	72	1,1	<b>BQ06</b>	215006	C15
30	35	72	1,6	<b>BO06</b>	215106	C15
30	60	72	3,5	<b>DJ06</b>	215506	C15



### Ausführung: angeschrägt

**Nutenstein: GP06**

30	30	82	1,3	<b>PT06</b>	215016	C15
----	----	----	-----	-------------	--------	-----



### Ausführung: Rohlinge, ungebohrt

**Nutenstein: GP06**

30	35	72	1,6	<b>HJ02</b>	200801	C15
30	60	72	3,5	<b>HJ03</b>	200803	C15
30	80	72	4,0	<b>HJ04</b>	200805	C15
50	50	60	3,4	<b>HJ05</b>	200807	C15
32	38	72	0,7	<b>HP01</b>	200300	Aluminium
32	76	72	1,4	<b>HP02</b>	200301	Aluminium

### Weiche Segment-Aufsatzbacke

### Ausführung

**Nutenstein: GP06**

120	60	60	9,0	<b>I</b>	<b>CN16</b>	217001	C15
120	64	64	3,2	<b>I</b>	<b>HN16</b>	219002	Aluminium
Ø169	76	76		<b>II</b>	<b>SG06</b>	218101	Stahl
Ø169	76	76		<b>II</b>	<b>AG06</b>	218201	Aluminium

### Gehärtete Greiferspannbacken, Außenspannung

**Nutenstein: GP06**

B	H	T	kg/Satz	Typ	Ident-Nr.	Werkstoff
40	49	20				

### Spannbereich

26- 44mm	1,7	<b>LA03</b>	234001	16MnCr5
32- 63mm	1,4	<b>LA04</b>	234002	16MnCr5
50- 77mm	1,4	<b>LA06</b>	234003	16MnCr5
64- 92mm	1,4	<b>LA07</b>	234004	16MnCr5
74- 108mm	1,2	<b>LA09</b>	234005	16MnCr5

### Gehärtete Greiferspannbacken, Innenspannung

**Nutenstein: GP06**

B	H	T	kg/Satz	Typ	Ident-Nr.	Werkstoff
40	49	20				

### Spannbereich

47- 76mm	1,4	<b>MA06</b>	235002	16MnCr5
67- 96mm	1,3	<b>MA07</b>	235003	16MnCr5
83-118mm	1,1	<b>MA09</b>	235004	16MnCr5

### Gehärtete umkehrbare Aufsatzbacken

**Nutenstein: GP06**

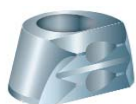
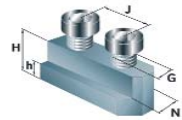
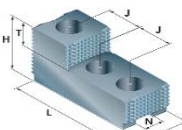
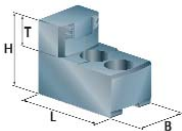
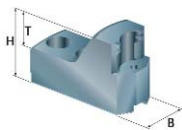
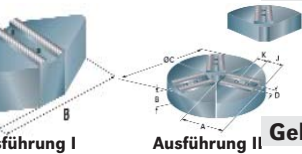
B	H	L	T	Typ	Ident-Nr.	Werkstoff
32	38	66	14	<b>GT06</b>	227002	16MnCr5

### Nutensteine

H	h	J	G	Typ	Ident-Nr.	Werkstoff
21	7	20	M10	<b>GP06</b>	292002	40NiCrMo6

### Auflagebolzen

G	H	SW	Typ	Ident-Nr.	Werkstoff
M6	5	10	<b>IT05</b>	229004	C15
M6	10	10	<b>IT10</b>	229005	C15
M6	15	10	<b>IT15</b>	229006	C15
M6	20	10	<b>IT20</b>	229007	C15



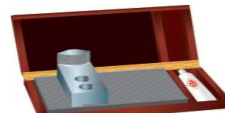
**Gripper Hartmetall**



**Ausdrehvorrichtung**



**Stangengreifer**



**Reinigungsplatte**



**Pendelbacken**