

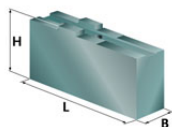
**Futtertype:
SMW Autoblok
KNCS 315-91**



HWR Spanntechnik GmbH
Lübemannstraße 13
28876 Oyten
Telefon (04207) 6887-0
Fax (04207) 6887-15
email: info@spannbacken.de

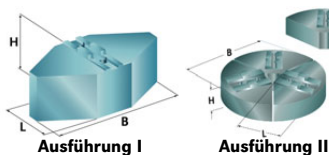


Weiche Aufsatzbacke mit Kreuzversatz



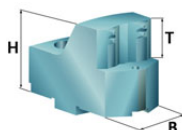
B	H	L	kg/Satz	Typ	Ident-Nr.	Werkstoff
30	55	125	3,6	CU25	236008	C15
40	60	90	3,9	CU251	237251	C15
40	60	125	5,8	CU252	237252	C15
40	80	125	7,5	CU253	237253	C15
40	100	125	9,6	CU254	237254	C15
40	125	125	12,0	CU255	237255	C15
60	60	90	6,2	DP25	236009	C15
80	60	90	8,5	CU257	237257	C15
40	60	125	2,0	CW25	238003	Aluminium

Weiche Segment-Aufsatzbacke mit Kreuzversatz Ausführung



B	H	L	kg/Satz	Typ	Ident-Nr.	Werkstoff
170	64	89	20,0	I CQ25	239003	C15
170	64	89	8,4	I HT25	240002	Aluminium
Ø254	51	114		II CF25	239103	C15

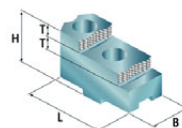
Gehärtete Greiferspannbacken, Außenspannung



B	H	T	kg/Satz	Typ	Ident-Nr.	Werkstoff
40	59	25				

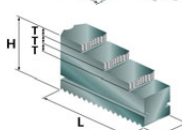
Spannbereich

46-52/ 56-62/ 66-73/ 77-83/ 87-94/ 98-105 109-115/ 120-126	2,4	LY30	250120	16MnCr5
51-57/ 61-67/ 71-78/ 82-88/ 93-99/ 103-110 114-121/ 125-131	2,4	LY31	250121	16MnCr5
135-142/ 146-153/ 157-164	2,3	LY32	250122	16MnCr5
130-136/ 141-147/ 152-158/ 162-169	2,3	LY33	250123	16MnCr5
172-179/ 183-189/ 194-200/ 205-211/ 216-222 227-233/ 238-244/ 249-255/ 260-266/ 270-277 281-288/ 292-299	2,0	LY34	250124	16MnCr5
177-184/ 188-195/ 199-206/ 210-217/ 221-228 232-239/ 243-250/ 254-261/ 265-271/ 276-282 287-293/ 298-304	2,0	LY35	250125	16MnCr5



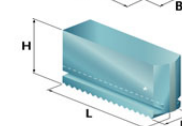
Gehärtete umkehrbare Aufsatzbacken

B	H	L	T	Typ	Ident-Nr.	Werkstoff
30	55	90	14	GX25	249003	16MnCr5



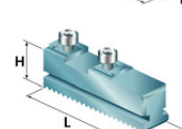
Gehärtete einteilige Stufenblockbacken

B	H	L	T	Typ	Ident-Nr.	Werkstoff
32	66	117	11	GST315	260315	16MnCr5



Monoblockbacken mit Modulgeradzahnung

B	H	L	Typ	Ident-Nr.	Werkstoff
32	90	118	UVB315	255031	15CrNi6

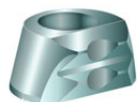


Grundbacken mit Modulgeradzahnung

B	H	L	Gewinde	Typ	Ident-Nr.	Werkstoff
32	43	115	M12*25	GBS31	263031	16MnCr5

Auflagebolzen

G	H	SW	Typ	Ident-Nr.	Werkstoff
M6	5	10	IT05	229004	C15
M6	10	10	IT10	229005	C15
M6	15	10	IT15	229006	C15
M6	20	10	IT20	229007	C15



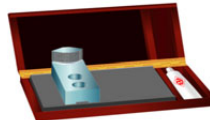
Gripper Hartmetall



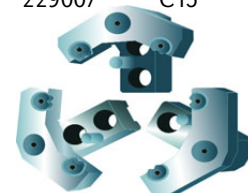
Ausdrehvorrichtung



Stangengreifer



Reinigungsplatte



Pendelbacken